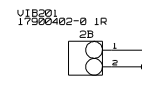
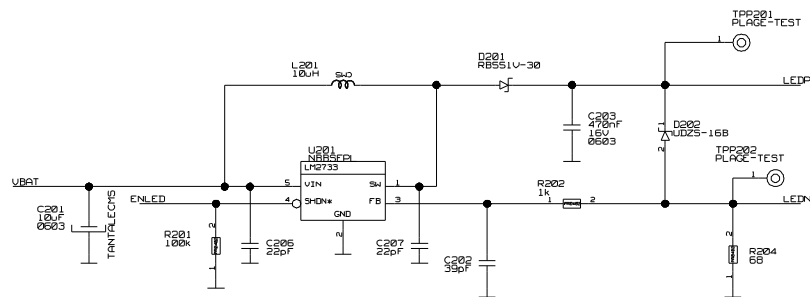


LCD\_BOARD SM10 V01A  
CIE 287052568  
CIU 287052571  
2005.02.22.TUESDAY

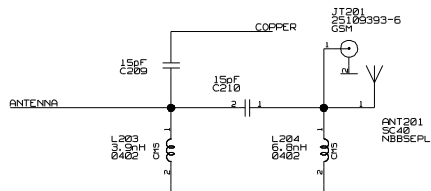
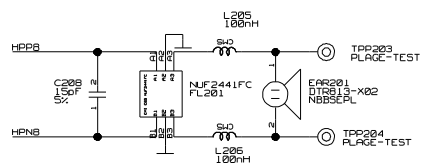
[illegible]

DOCUMENT SAGEM. REPRODUCTION ET DIVULGATION INTERDITES ALL RIGHTS RESERVED. REPRODUCTION AND DISCLOSURE PROHIBITED

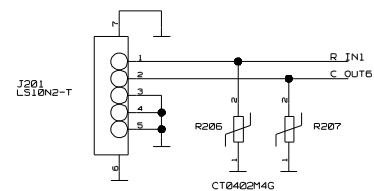
# VIBRATOR BRACKET



ANTENNA



## SIDEKEY FOR CAMERA

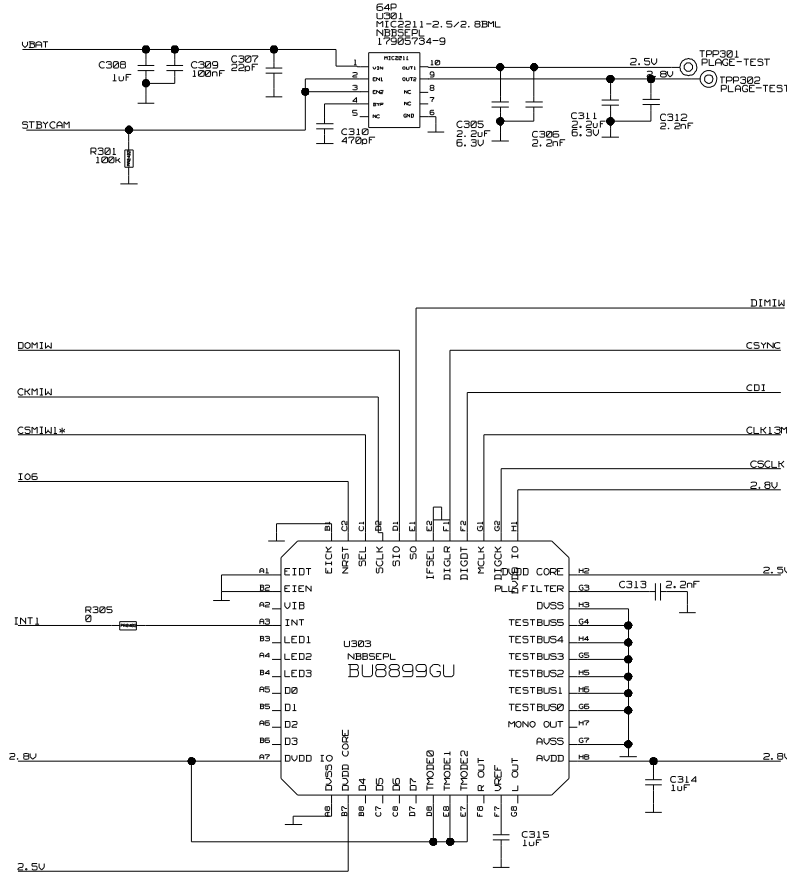
[illegible]

DRAWING  
LCD\_BOARD\_SM10\_V01A  
lcd\_board.sm10\_v01a  
LAST\_MODIFIED=Wed Feb 23 08:48:31 2005

4000003200R4300001

DOCUMENT SAGEM REPRODUCTION ET DIVULGATION INTERDITES ALL RIGHTS RESERVED. REPRODUCTION AND DISCLOSURE PROHIBITED

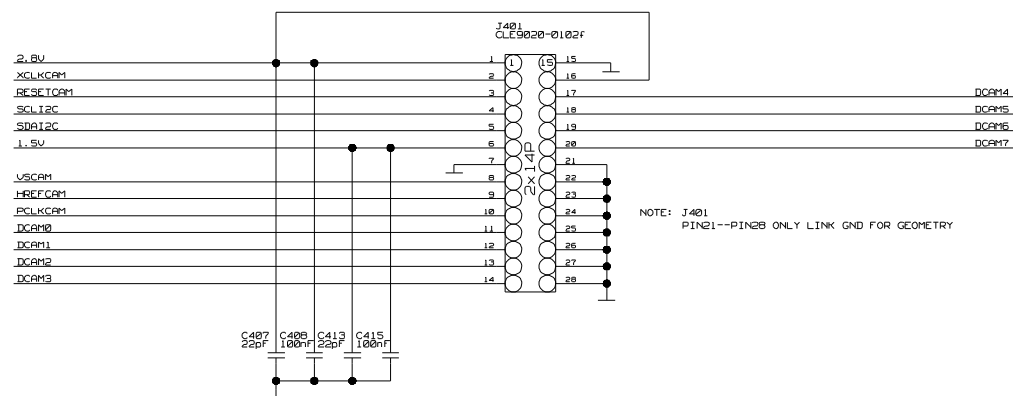
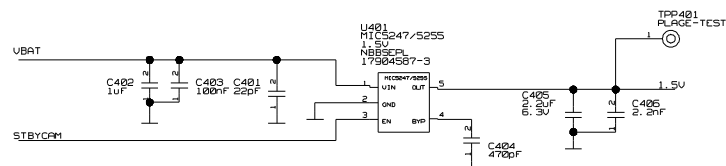
# MELODY CHIP CIRCUIT



NOI/NOME	DATE	DATE	NOI/NOME	DATE
MODIFIED	22-02-2005	00/01	MODIFIED	22-02-2005
LIBELLE			LIBELLE	
IDENTIFICATION			IDENTIFICATION	
FORMAT			FORMAT	
SIZE			SIZE	
TYPE			TYPE	
PRET			PRET	
UCC.			UCC.	

DRAWING  
LCD\_BOARD\_SM10\_V01A  
LAST\_MODIFIED=Tue Feb 22 13:04:05 2005

CAMERA CONNECTOR CIRCUIT



NOTE: J401  
PIN21--PIN28 ONLY LINK GND FOR GEOMETRY

[illegible]

DRAWING  
LCD\_BOARD\_SMI0\_V01A  
lcd\_board-smi0-v01a

```
lcd_board_sml0_v01a
LAST_MODIFIED=Tue Feb 22 13:04:22 2005
```

DOCUMENT SAGEM, REPRODUCTION ET DIVULGATION INTERDITES ALL RIGHTS RESERVED, REPRODUCTION AND DISCLOSURE PROHIBITED

[illegible]

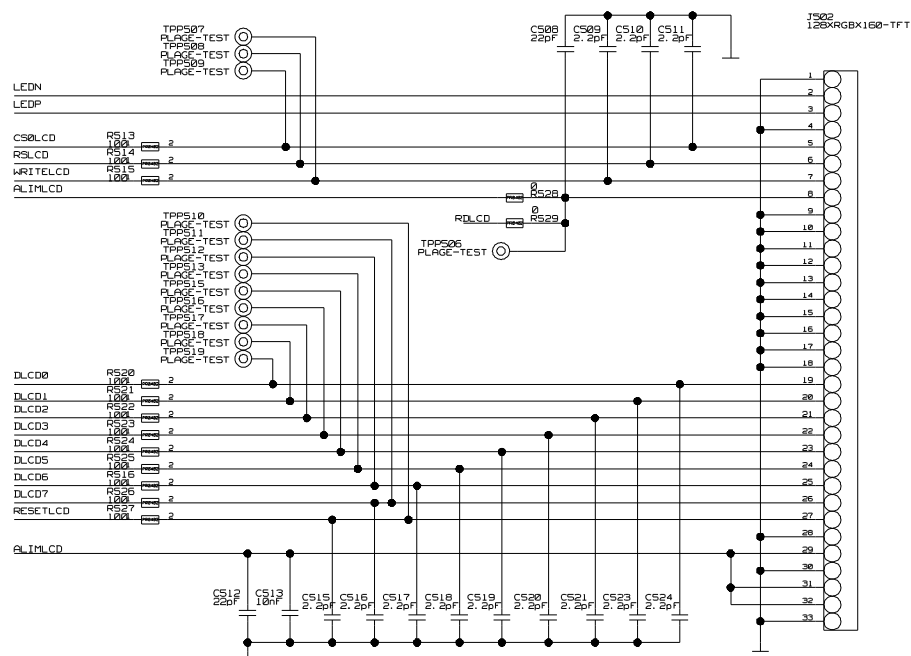
Pinout diagram for the AKK780145 module. The diagram shows a 25-pin connector on the left and a 26-pin connector on the right. The top of the module is labeled 'J501 AKK780145' and 'REV. 01'.

**Left Connector (25 pins):**

- 1: VBAT
- 2: VBAT
- 3: VBAT
- 4: VBAT
- 5: VBAT
- 6: OUT\_IN
- 7: R\_IN1
- 8: R\_IN2
- 9: R\_IN3
- 10: R\_IN4
- 11: R\_IN5
- 12: R\_IN6
- 13: C\_OUT1
- 14: C\_OUT2
- 15: C\_OUT3
- 16: C\_OUT4
- 17: C\_OUT5
- 18: C\_OUT6
- 19: IOT
- 20: SIMRST
- 21: SIMCLK
- 22: SIMIO
- 23: SIMVCC
- 24: CHARGEUR
- 25: CHARGEUR

**Right Connector (26 pins):**


- 50: VBAT
- 49: VBAT
- 48: VBAT
- 47: VBAT
- 46: VBAT
- 45: GND
- 44: MICIN
- 43: MICIP
- 42: GND
- 41: HSMICIP
- 40: HSMICIN
- 39: HSOL
- 38: HSOR
- 37: GND
- 36: INT12C
- 35: CTS
- 34: RTS
- 33: DSR
- 32: DTR
- 31: TXD1
- 30: RXD1
- 29: RI
- 28: BCD
- 27: RXD2
- 26: VBACKUP



MODIFIE MODIFIED	NOUVEAU NEW	DATE 22/02/2005	VERIFIE CHECKED	NOUVEAU NEW	DATE
LIBELLE		SAGEM			
DENOMINATION		SCHEMA LCD BOARD SM10 V01A			
R. FAB. P. N.		FORMAT		F/FEUILLE/PAGE	
SAGEM SA		SIZE		5/	
F6151		NUMERO DU DOCUMENT		R43 000 01	
A2		NUMERO DU DEPOSE		000 01	
VERIFIE		FABRIQUE		VERIFIE	
NOUVEAU		NOUVEAU		NOUVEAU	

DRAWING  
LCD\_BOARD\_SMI0\_V01A  
lcd\_board\_smi0\_v01a  
LAST\_MODIFIED=Tue Feb 22 17:00:00 2011

2, 5U	4B2C	4C4C					
3, 5U	3B2C	3C2C	3D3C				
4, 5U	4B2C	3C2C	3D2C	3D3C	4C4C		
ACND	1C1						
ALF,ICLND	1A4C	5B4C	5C3C	5D3C			
ANTENNA	1A2C	5C3C					
BSCAN	1A4C	1C1					
C OUT1	1B3C	5C4C					
C OUT2	1B3C	5C4C					
C OUT3	1B3C	5C4C					
C OUT4	1B3C	5C4C					
C OUT5	1B3C	5C4C					
C OUT6	1B3C	2C1C	5C4C				
DI	1B4C	5D2C					
CHARGEUR	1A4C	5D4C					
CH14	1A2C	3B3C					
CL,1,3M	1A2C	4C2C					
COU1B	1A2C	5B3C					
CORRER	2C2C						
CS&L,CD	1A2C	5C3C					
CS&L	1B4C	3C2C					
CS&L1 *	1A2C	3C3C					
CS&YC	1B3C	5C4C					
CTM1	1B3C	5C3C					
D&C	1B3C	4C4C					
DC&R1	1B3C	4C4C					
DC&R2	1B3C	4C4C					
DC&R3	1B3C	4C4C					
DC&R4	1A3C	4C2C					
DC&R5	1A3C	4C2C					
DC&R6	1A3C	4C2C					
DC&R7	1A3C	4C2C					
DCD	1B3C	5D3C					
DIM14	1B3C	3B2C					
DL&C0	1B2C	5C3C					
DL&C1	1B2C	5C3C					
DL&C2	1B2C	5C3C					
DL&C3	1B2C	5D3C					
DL&C4	1B2C	5D3C					
DL&C5	1B2C	5D3C					
DL&C6	1B2C	5D3C					
DL&C7	1B2C	5D3C					
DM14	1A2C	3B3C					
ENR	1A3C	5C3C					
ETB	1B3C	2C4C					
D&L	1B3C	2B4C					
FW&R	1B4C	2D4C					
FW&R	1B4C	2C4C					
HE&FC&R1	1A3C	4C4C					
HE&FC&R2	1A3C	4C4C					
HE&FC&R3	1B4C	5B4C	5C3C				
HS&L	1A4C	5C3C					
HS&R	1A4C	5C3C					
INT1	1B2C	3C3C					
INT&C	1A2C	5C3C					
LOS	1B2C	3C3C					
107	1A2C	5C4C					
101	1A2C	5C3C					
1TD&TA	1B2C	5A3C					
LEDN	2B2C	5B3C					
LEDP	2B2C	5B3C					
MCIN	1B4C	5C3C					
MCIP	1A4C	5C3C					
OUT IN	1B3C	1C1	5C4C				
P&L&C&R1	1A3C	4C4C					
R IN1	1B3C	2C1C	5C4C				
R IN2	1B3C	5C4C					
R IN3	1B3C	5C4C					
R IN4	1B3C	5C4C					
R IN5	1B3C	5C4C					
R IN6	1B3C	5C4C					
RL&C	1B3C	5D2C					
RES&CT&R1	1A3C	4C4C					
RES&CT&C	1B2C	5D3C					
RES&CT&C	1B2C	5D3C					
RL&C	1B2C	5C3C					
RTS	1B3C	5C3C					
RD1	1B3C	5D3C					
RD&2	1B3C	1C1	5D3C				
SC&L&R	1B3C	5C4C					
SD&R1&C	1A3C	4C4C					
ST&P&L&C	1B1C	5D4C					
ST&P10	1B3C	5C4C					
ST&P&ST	1B1C	5D4C					
ST&P&VC	1B1C	5D4C					
ST&TER&C&R	1A3C	5D3C	4B3C				
T&K	1B4C	1C1					
TD&IN&L0	1A4C	1C1					
TD&IG&IT0	1A4C	1C1					
TD&IN&L0	1A4C	1C1					
TD&IG&IT1	1A4C	1C1					
TR&S	1B4C	1C1					
TR&D1	1B3C	1C1	5D3C				
TR&D2	1B3C	1C1	5D3C				
UB&P&L&C	1A4C	5D3C					
UB&T	1A4C	1D1C	2B4C	3A3C	4B3C	5A3C	5C3C
V&C&R1	1A3C	4C4C					
W&T&L&C	1B2C	5C3C					
W&L&C&R1	1B3C	5C4C					

MODIFICADO POR	NOVA NOME	DATA	VERIFICADO	NOVA NOME	DATA
MODIFICADO POR	TRIO	18/0	22/08/2005		
					
LITELLE _____ DENOMINATION SCHEMA LCD BOARD SM10 V01A _____ FEUILLE / SHEET _____					
R. FAB. P. N.		FORMAT	SIZE	NUMERO DU DOCUMENT	TYPE
SAGEM BA		A2	F6151	01	VERGEL

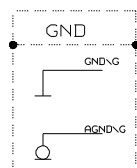
DOCUMENT SAGEM-REPRODUCTION ET DIVULGATION INTERDITES ALL RIGHTS RESERVED-REPRODUCTION AND DISCLOSURE PROHIBITED

TAP111 PLOT	1C2
TAP112 PLOT	1C2
TAP118 POINTSET	1C2
TAP119 POINTSET	1C2
TAP261 PLOT	2A3
TAP262 PLOT	2B3
TAP263 PLOT	2C3
TAP264 PLOT	2D3
TAP381 PLOT	3A2
TAP382 PLOT	3B2
TAP383 PLOT	4A2
TAP383 PLOT	5A2
TAP586 PLOT	5C2
TAP587 PLOT	5B2
TAP588 PLOT	5B2
TAP589 PLOT	5B2
TAP518 PLOT	5C2
TAP511 PLOT	5C2
TAP512 PLOT	5C2
TAP513 PLOT	5C2
TAP514 PLOT	5C2
TAP515 PLOT	5C2
TAP517 PLOT	5C2
TAP518 PLOT	5C2
TAP519 PLOT	5C2
U261 CON=50T235	2B3
U31 MIC1211	3A3
U381 BUB999GJ	3C3
U481 MIC40235	4B3
U581 TAP265	2A3
U586L U58C9R	

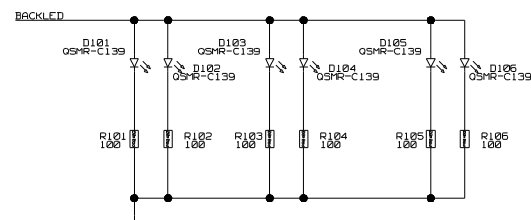
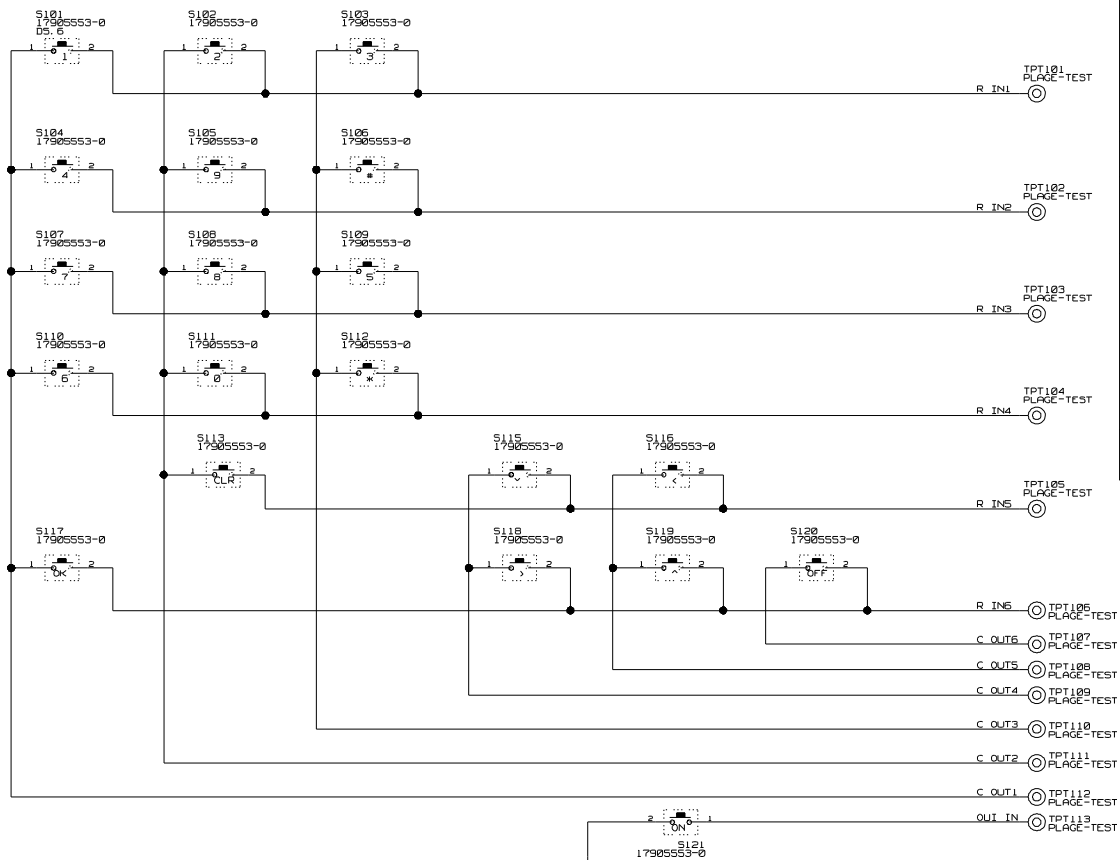
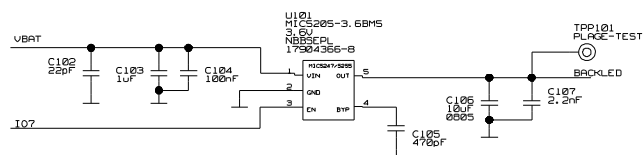
TAP111 PLOT	1C2
TAP112 PLOT	1C2
TAP118 POINTSET	1C2
TAP119 POINTSET	1C2
TAP261 PLOT	2A3
TAP262 PLOT	2B3
TAP263 PLOT	2C3
TAP264 PLOT	2D3
TAP381 PLOT	3A2
TAP382 PLOT	3B2
TAP383 PLOT	4A2
TAP383 PLOT	5A2
TAP586 PLOT	5C2
TAP587 PLOT	5B2
TAP588 PLOT	5B2
TAP589 PLOT	5B2
TAP518 PLOT	5C2
TAP511 PLOT	5C2
TAP512 PLOT	5C2
TAP513 PLOT	5C2
TAP514 PLOT	5C2
TAP515 PLOT	5C2
TAP517 PLOT	5C2
TAP518 PLOT	5C2
TAP519 PLOT	5C2
U261 CON=50T235	2B3
U31 MIC1211	3A3
U381 BUB999GJ	3C3
U481 MIC40235	4B3
U581 TAP265	2A3
U586L U58C9R	

—

## KEYBOARD



BACKKEY LED

[illegible]

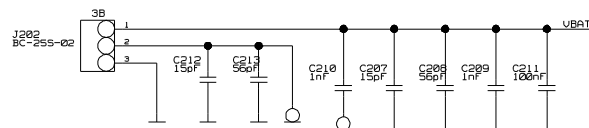
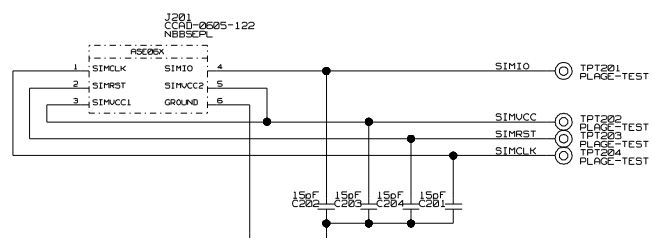
DRAWING  
KEYPAD\_BOARD\_SMI0\_V01  
keypad\_board-smi0-v01

```
keypad_board-sm10-v01
LAST_MODIFIED=Thu Dec 30 15:53:15 2004
```



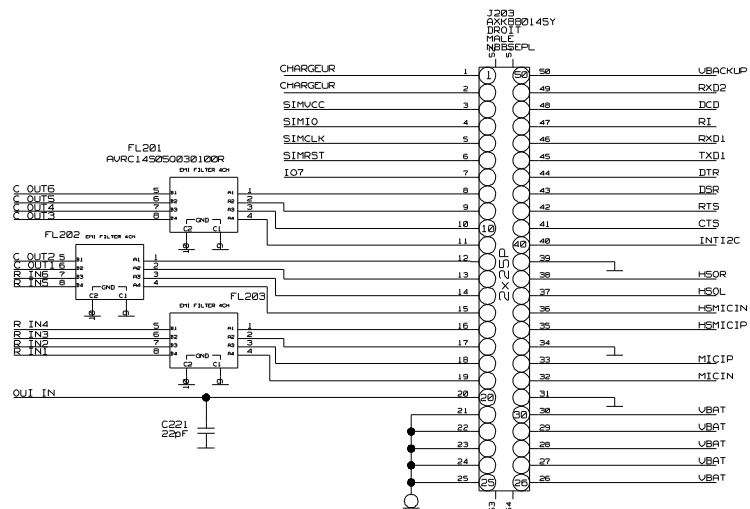
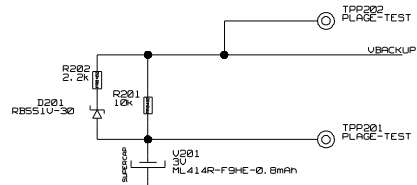
DOCUMENT SAGEM. REPRODUCTION ET DIVULGATION INTERDITES ALL RIGHTS RESERVED. REPRODUCTION AND DISCLOSURE PROHIBITED

# BATTERY CONNECTOR



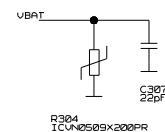
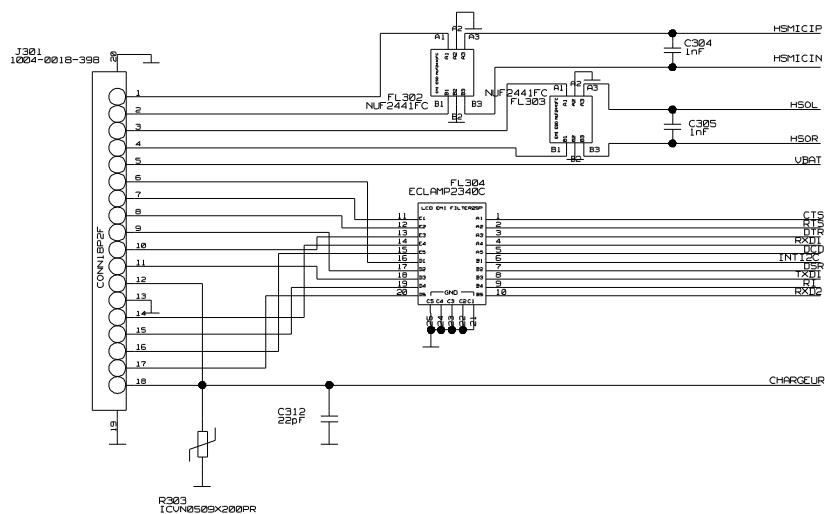
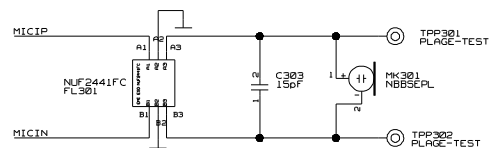
# BACKUP BATTERY

BTB CONNECTOR

[illegible]

DRAWING  
KEYPAD\_BOARD.SM10\_V01  
keypad\_board-sm10\_v01  
AST\_MODIFIED=Wed Jan 5 17:17:04 2005

## I/O CONNECTOR

[illegible]

DRAWING  
KEYPAD\_BOARD-sm10\_v01  
keypad\_board-sm10\_v01  
LAST\_MODIFIED=Thu Dec 30 15:33:03 2004