

PCB VERSION

Rev.	Date/Name	Scale	Description
1	07/11/19	1/5	BASEBAND_Navi
2	07/11/19	1/5	BASEBAND_Navi
3	07/11/19	1/5	BASEBAND_Navi
4	07/11/19	1/5	BASEBAND_Navi
5	07/11/19	1/5	BASEBAND_Navi
6	07/11/19	1/5	BASEBAND_Navi
7	07/11/19	1/5	BASEBAND_Navi
8	07/11/19	1/5	BASEBAND_Navi
9	07/11/19	1/5	BASEBAND_Navi
10	07/11/19	1/5	BASEBAND_Navi



[illegible]

# KEY\_LED

VBAT

SSC-SBI04-IT

KEY\_LED[1:6]

R001 220 R002 220 R003 220 R004 220 R005 220 R006 220

LED6 LED5 LED4 LED3 LED2 LED1

C000 27p C001 27p C002 27p C003 27p C004 27p C005 27p


(0603) (0603) (0603) (0603) (0603) (0603)

+

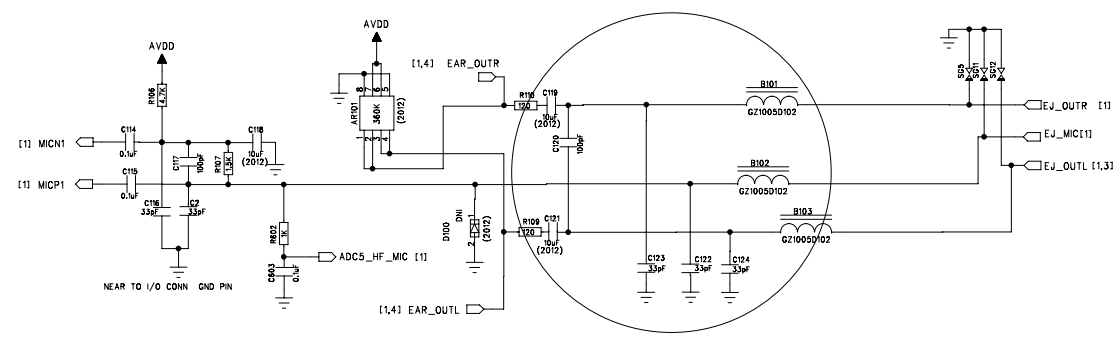
[illegible]

# FLASH LED FPCB

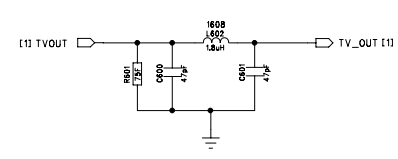
[illegible]

ECR No.	Rev.	Date/Name	Ezze Mobile Tech	Scale:	Description:		
					TRANSCEIVER		
			SLT100		Stage	Sheet	Remarks
					MP	3 / 5	
					Ver	Date	Item
						07/01/19	

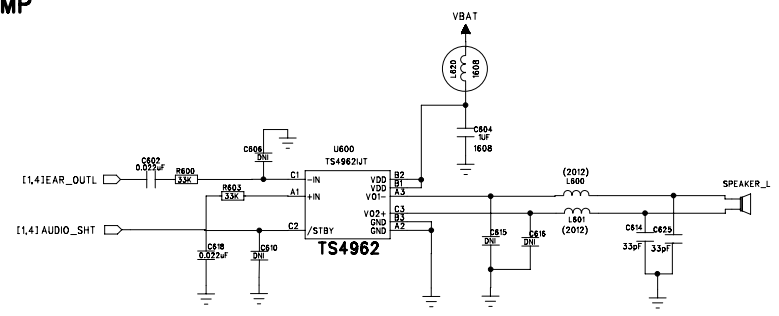
AUDIO



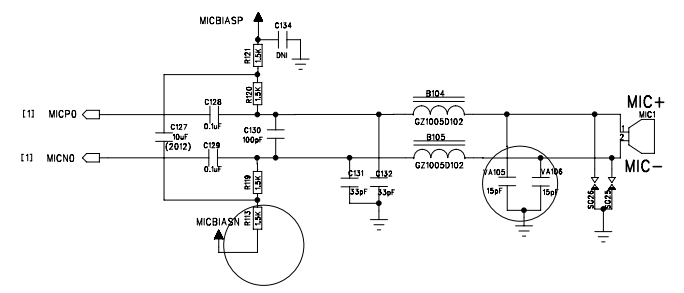
TV\_OUT



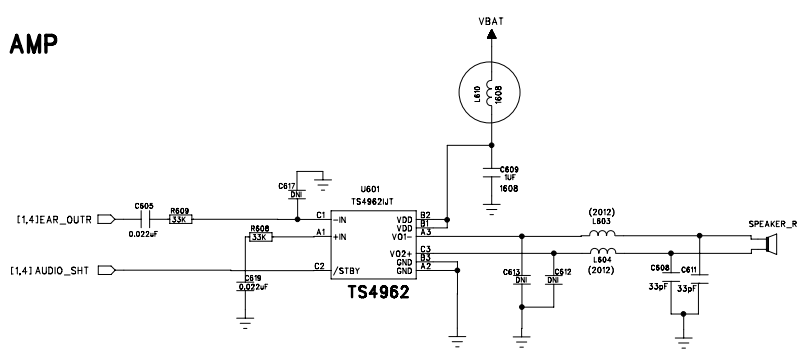
AUDIO AMP



MIC.



AUDIO AMP



ECR No.	Rev.	Date/Name	Ezze Mobile Tech	Scale:	Description:
					TRANSCEIVER
					Sheet 4/5
					Item

[illegible]

A rectangle is shown with vertices labeled 60 (top-left), 31 (top-right), 30 (bottom-right), and 1 (bottom-left).

1.Recommend trace width :  
A. Audio(SPK\_RCV) : 0.2  
(Audio line must protected by GND on upper,lower,left,right side)  
B. VBAT : 0.4  
C. DVDD & BLU LED line : 0.3  
D. Data & Control : 0.13  
E. Vibrator : 0.25  
(Unit : mm)


60	Header	31
1		30

MAIN BOARD

LCD PART  
1 Header 30  
60 31  
GB042-60P-H10

[illegible]

Pin1 : A,B Terminal (KCOL2)  
Pin2 : C,D Terminal (KROW0)

ECR No.	Rev.	Date/Name	Ezze Mobile Tech	Scale:	Description:		
					LCD		
			SLT100	061120	Size P2	Sheet 5/5	Remarks
					Var	Date	Item