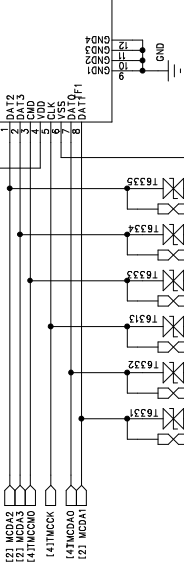
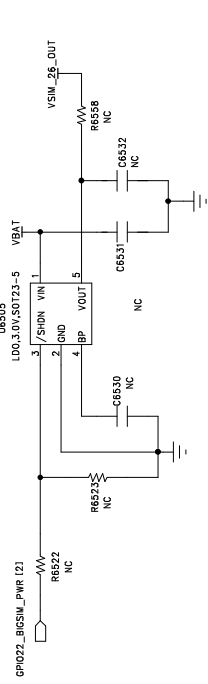
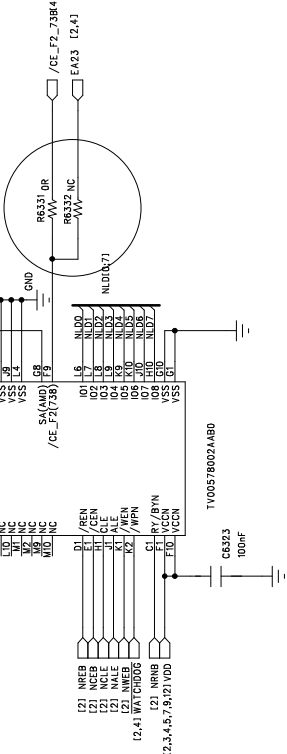
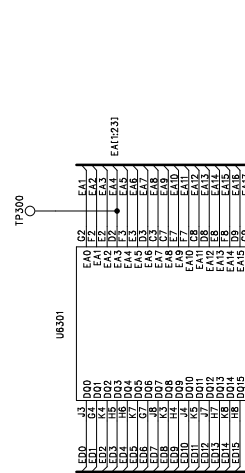
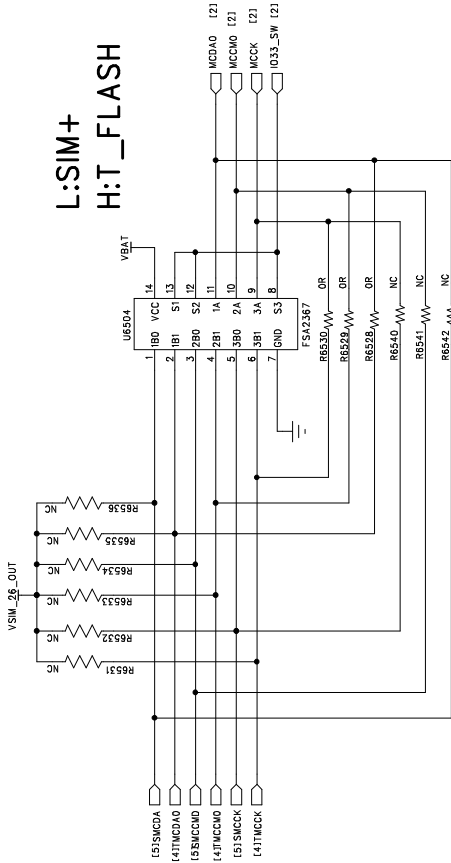


12,3,4,5,7,9,10 VDD

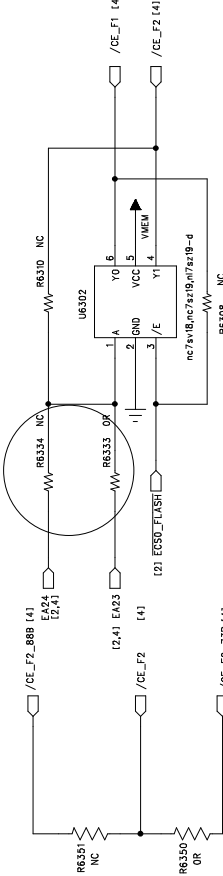
CCAP 01U0 6.3V K XGR 0603



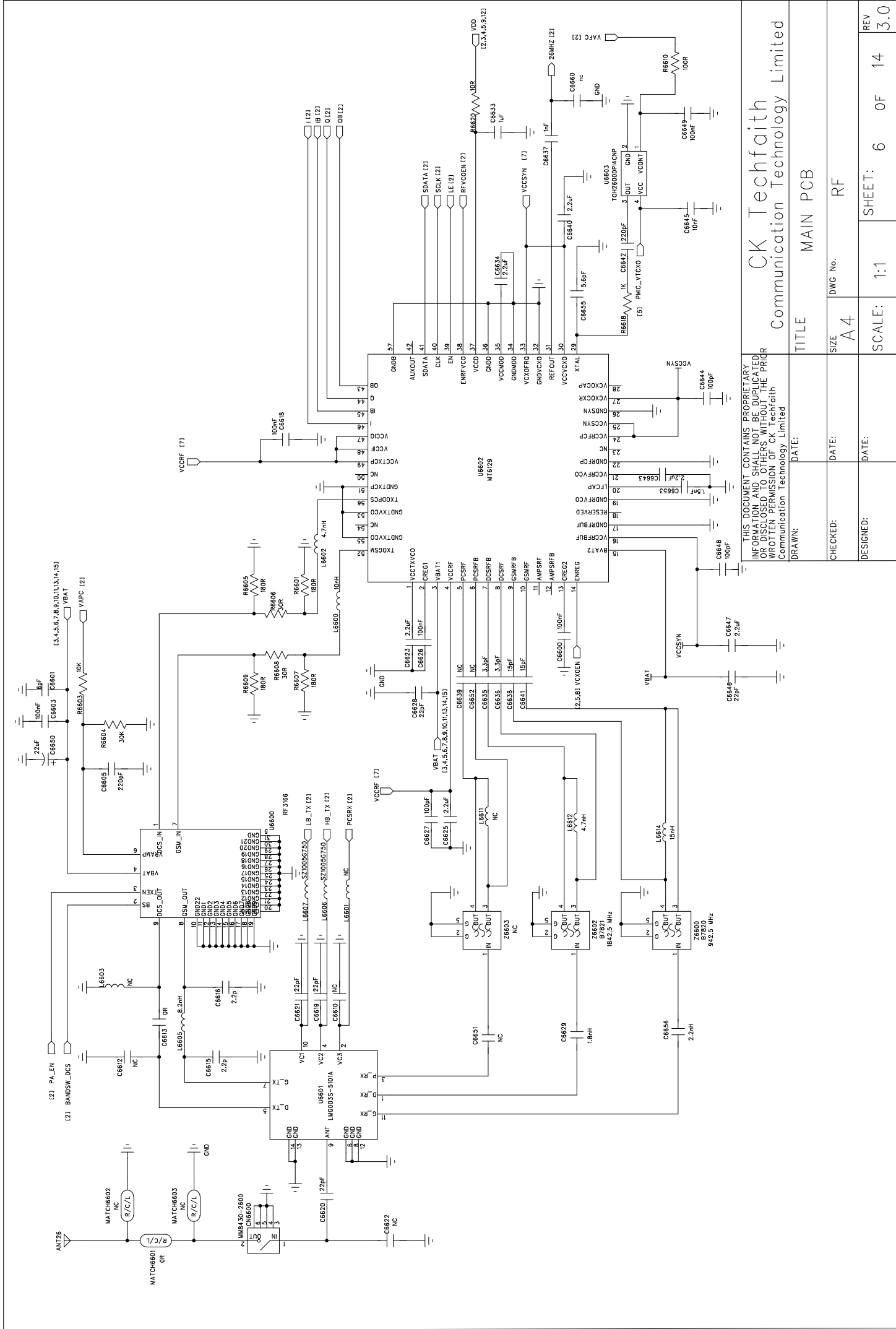
L:SIM+
H:T_FLASH



toshiba 3in1 mcp can compatible with spansion and samsung's 2in1 MCP.



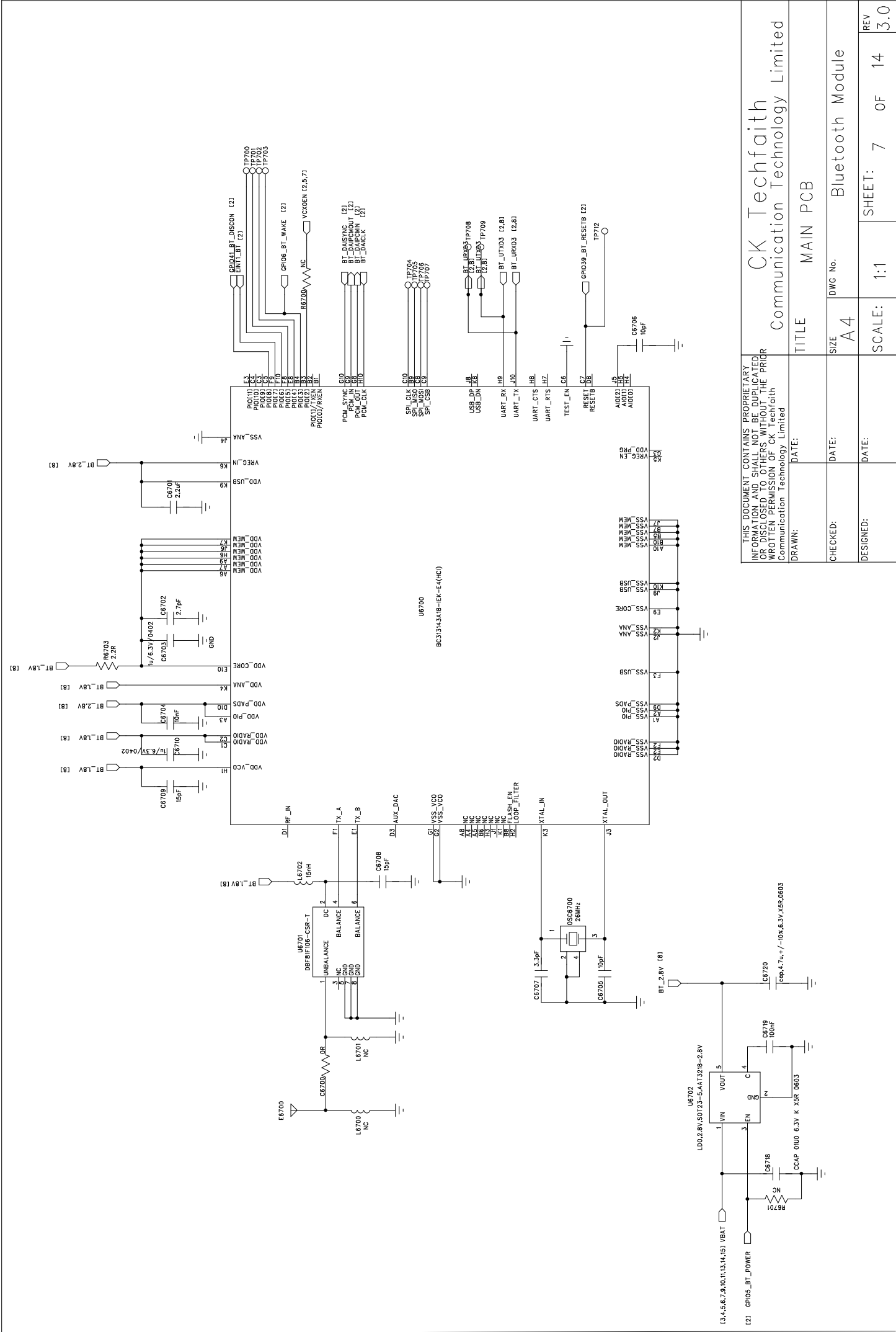
THIS DOCUMENT CONTAINS PROPRIETARY INFORMATION AND IS UNCLASSIFIED OR DISCLOSED TO OTHERS WITHOUT THE PRIOR WRITTEN PERMISSION OF CK Techfaith Communication Technology Limited			
DRAWN:	DATE:	TITLE	MT6226 CKT STANDRAD CIRCUIT
CHECKED:	DATE:	SIZE	A 4
DESIGNED:	DATE:	SCALE:	1:1
		DWG No.	MEM,TF
		SHEET:	3 OF 14
		REV	3.0



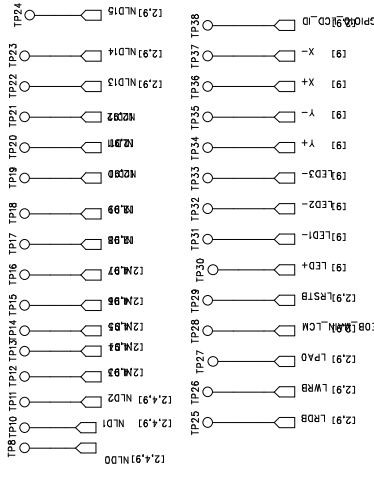
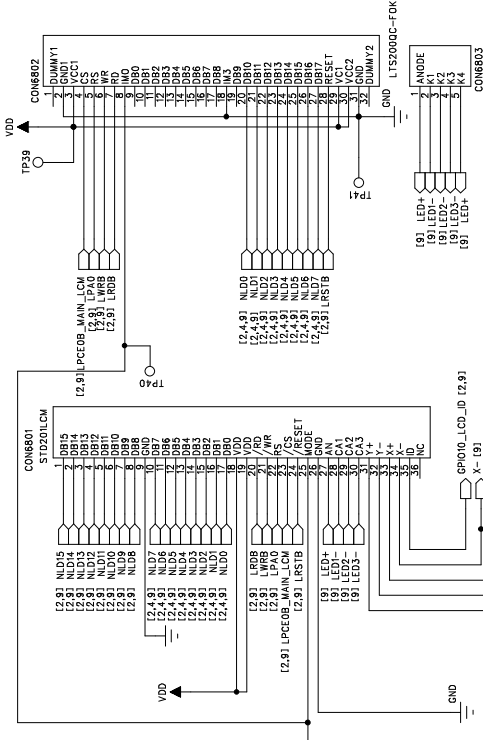
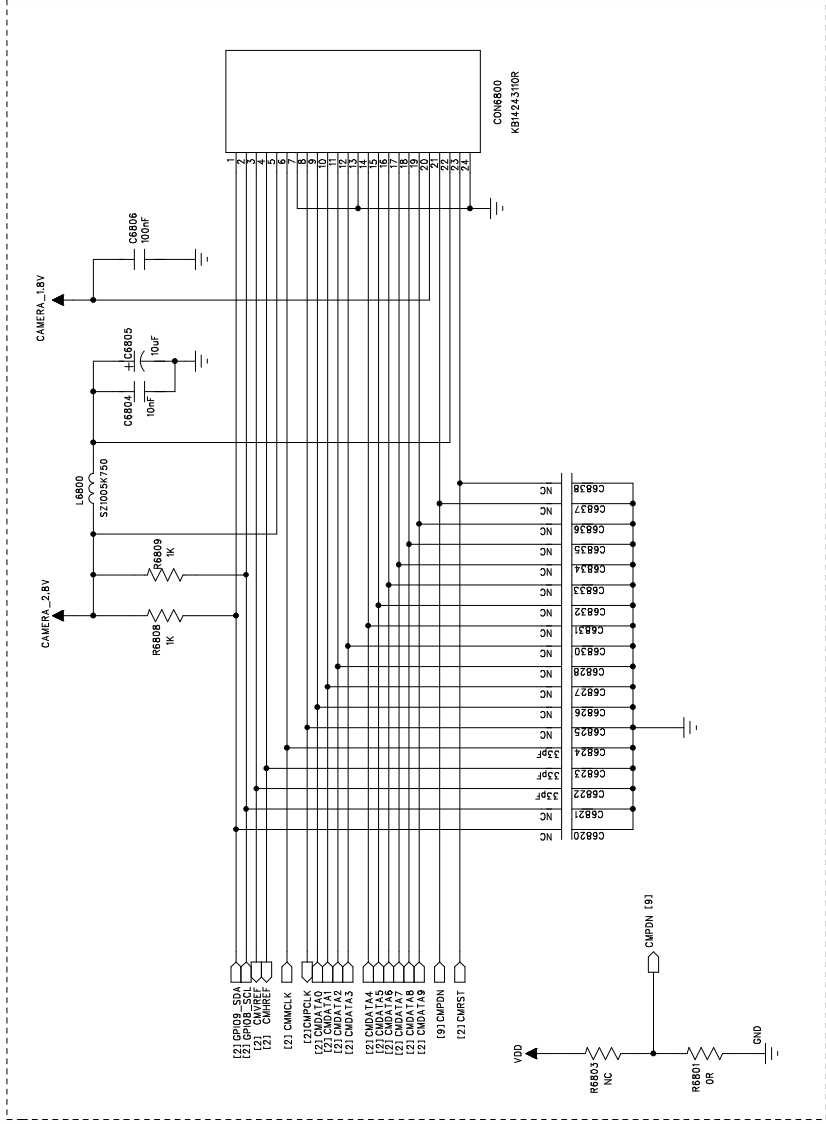
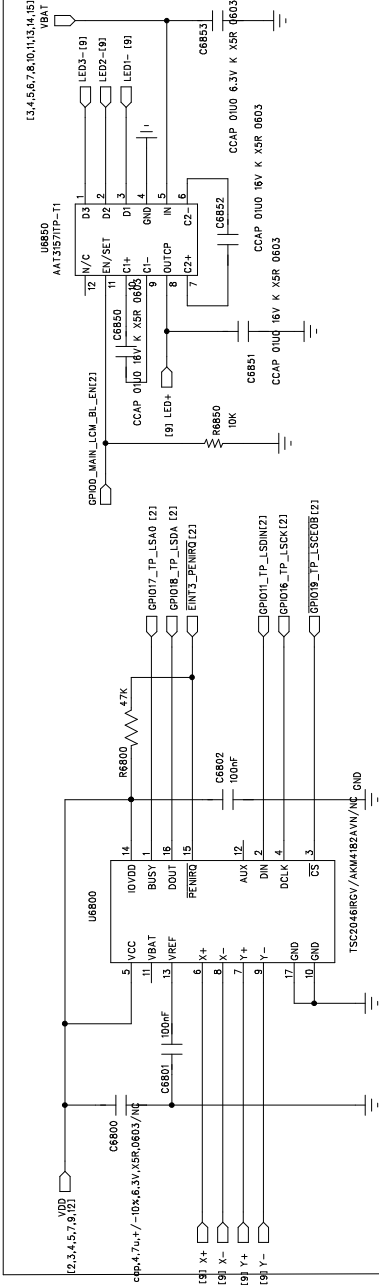
THIS DOCUMENT CONTAINS PROPRIETARY
INFORMATION AND SHALL NOT BE
DISCLOSED TO OTHERS WITHOUT THE PRIOR
WRITTEN PERMISSION OF CK Techfaith
Communication Technology Limited

CK Techfaith
Communication Technology Limited

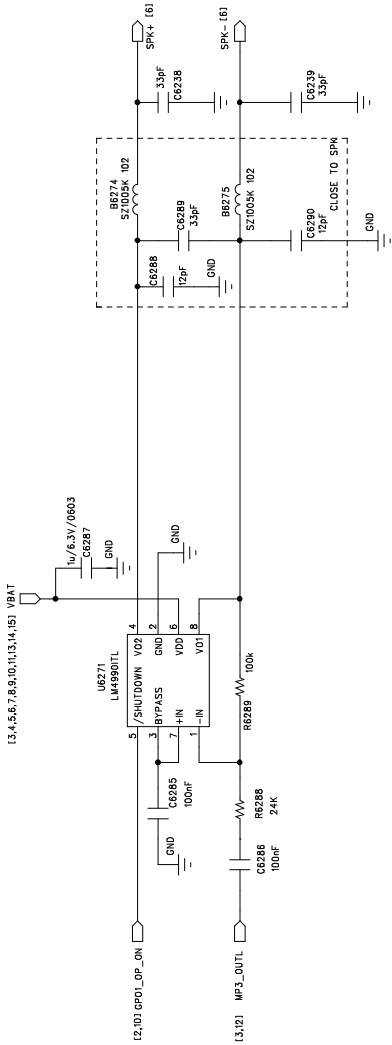
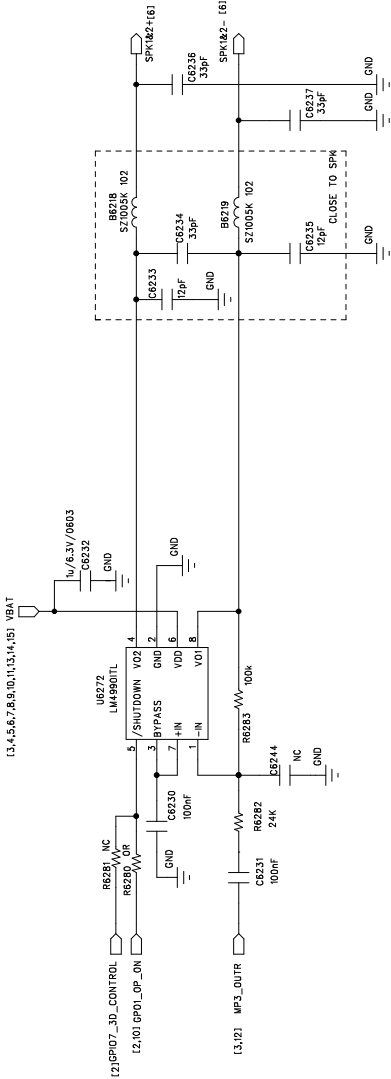
TITLE	MAIN PCB
DATE:	
CHECKED:	
DESIGNED:	
SIZE	A4
DWG No.	RF
SCALE:	1:1
SHEET:	6 OF 14
REV	3.0



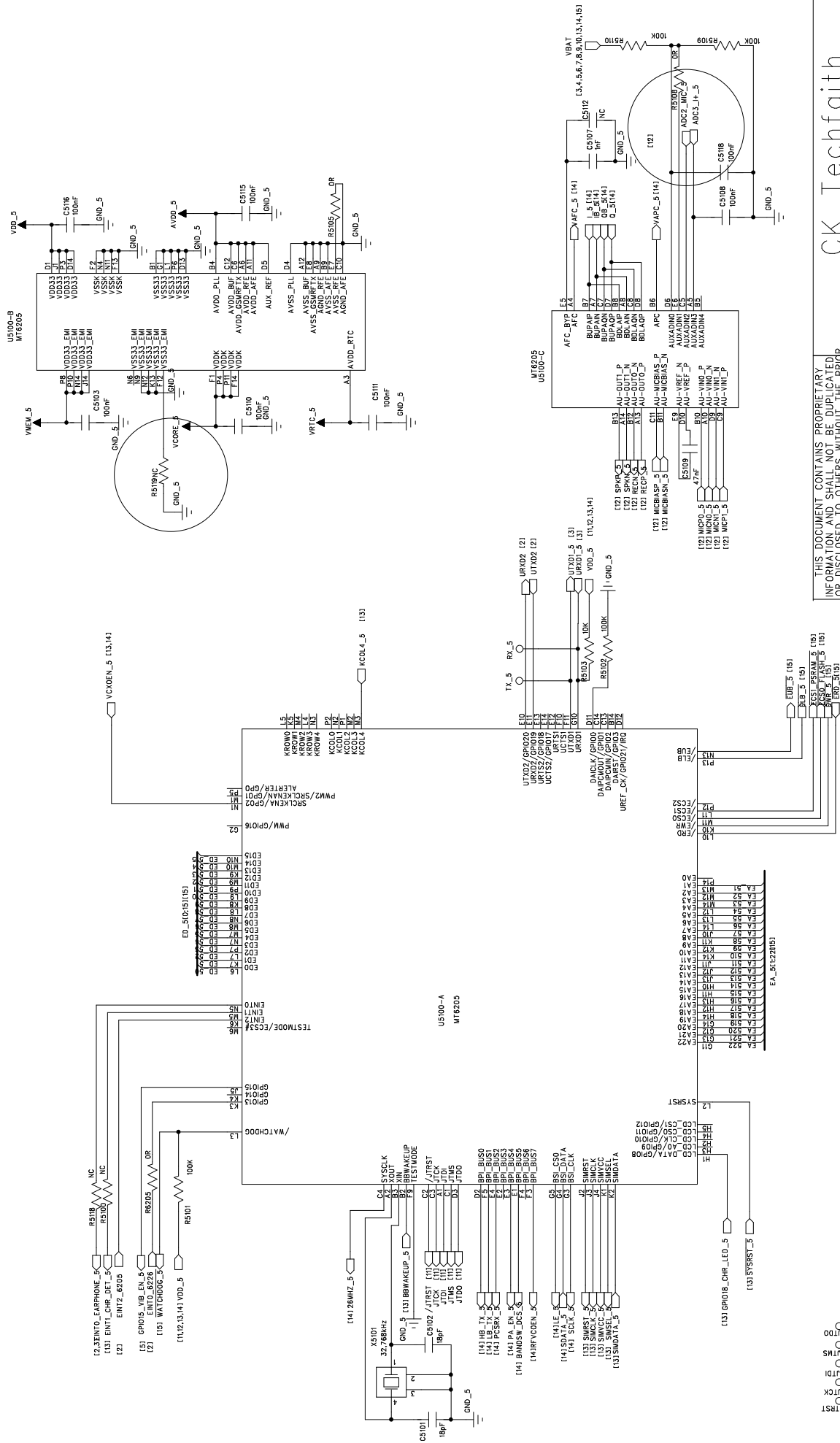
THIS DOCUMENT CONTAINS PROPRIETARY INFORMATION AND SHALL NOT BE DISCLOSED TO OTHERS WITHOUT THE PRIOR WRITTEN PERMISSION OF CK Techfath Communication Technology Limited		CK Techfath Communication Technology Limited	
DRAWN:	DATE:	TITLE	MAIN PCB
CHECKED:	DATE:	SIZE	A4
DESIGNED:	DATE:	SCALE:	1:1
		DWG No.	Bluetooth Module
		SHEET:	7 OF 14
		REV	3.0



THIS DOCUMENT CONTAINS PROPRIETARY INFORMATION AND SHALL NOT BE DUPLICATED OR DISCLOSED TO OTHERS WITHOUT THE PRIOR WRITTEN PERMISSION OF CK Techfaith Communication Technology Limited		CK Techfaith Communication Technology Limited	
DRAWN:	DATE:	TITLE SWAN	
CHECKED:	DATE:	SIZE A4	DWG No. COVER
DESIGNED:	DATE:	SCALE: 1:1	SHEET: 8 OF 14
			REV 3.0



THIS DOCUMENT CONTAINS PROPRIETARY INFORMATION AND SHOULD NOT BE DISCLOSED TO OTHERS WITHOUT THE PRIOR WRITTEN PERMISSION OF CK Techfath Communication Technology Limited			
DRAWN:	DATE:	TITLE	Dinosaur Main PCB
CHECKED:	DATE:	SIZE	A 4
DESIGNED:	DATE:	SCALE:	1:1
		DWG No.	AUDIO
		SHEET:	9 OF 14
		REV	3.0



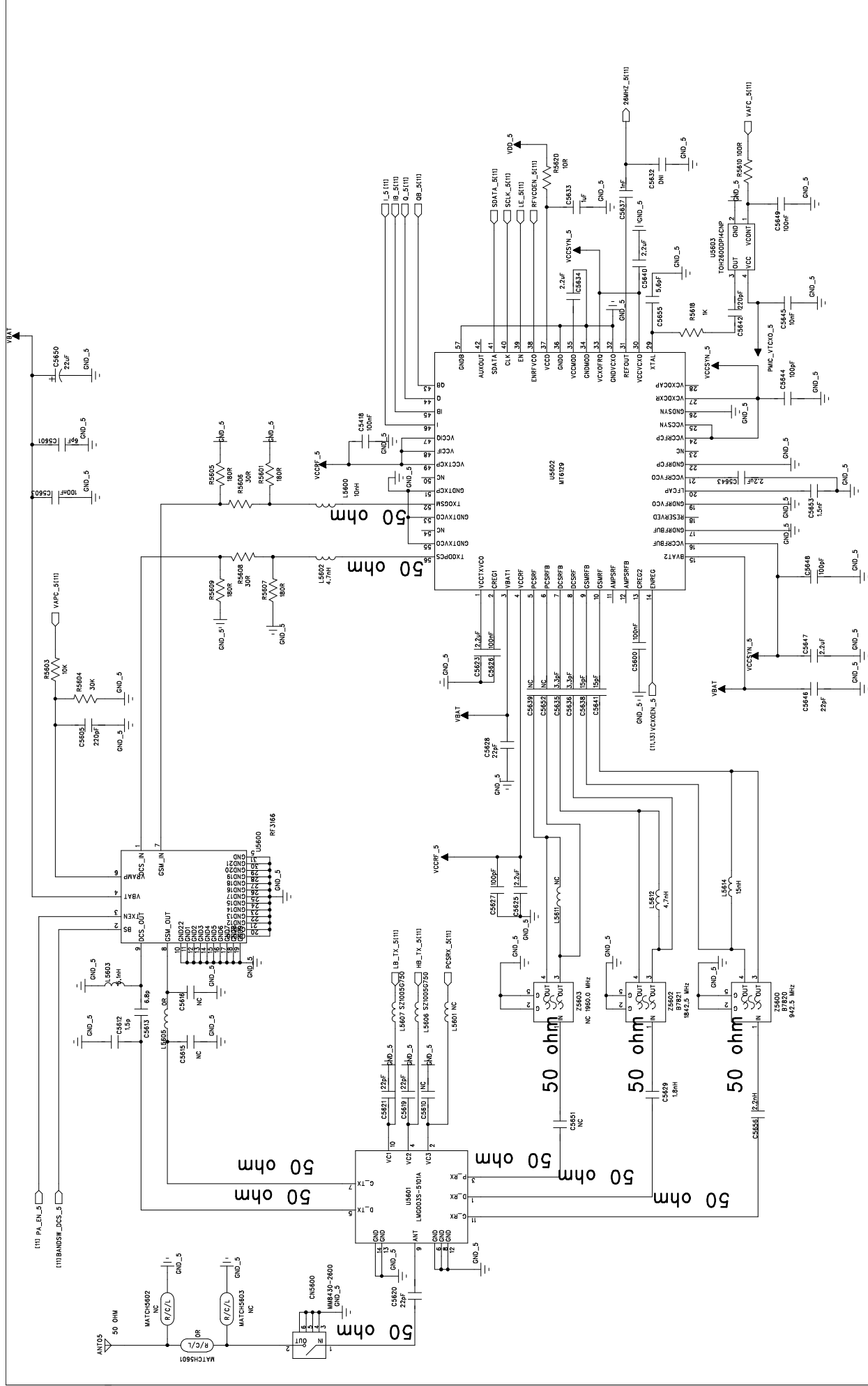
THIS DOCUMENT CONTAINS PROPRIETARY INFORMATION AND SHALL NOT BE DUPLICATED OR DISCLOSED TO OTHERS WITHOUT THE PRIOR WRITTEN PERMISSION OF CK Techfaith Communication Technology Limited

CK Techfaith
Communication Technology Limited

DRAWN:	DATE:	TITLE MT6205 CKT STANDARD CIRCUIT			
CHECKED:	DATE:	SIZE A 4	DWG No. MT6205	BB STANDARD CIRCUIT	
DESIGNED:	DATE:	SCALE:	1:1	SHEET: 10 OF 14	REV 3.0

TP-JT01
TP-JT02
TP-JT03
TP-JT04
TP-JT05
TP-JT07
TP-JT08
TP-JT09
TP-JT10
TP-JT11
TP-JT12
TP-JT13
TP-JT14

EA_5[1:22015]



THIS DOCUMENT CONTAINS PROPRIETARY INFORMATION AND SHALL NOT BE DUPLICATED OR DISCLOSED TO OTHERS WITHOUT THE PRIOR WRITTEN PERMISSION OF CK Techfath Communication Technology Limited		CK Techfath Communication Technology Limited	
DRAWN:	DATE:	TITLE	
CHECKED:	DATE:	SIZE	DWG No.
DESIGNED:	DATE:	A 4	
		SCALE:	1:1
		SHEET:	13 OF 14
		REV	3.0

